

DRAFT SECTION 7.11 CONTRIBUTION PLAN & TECHNICAL DOCUMENT – ADDITIONAL INFORMATION

BACKGROUND DOCUMENTS USED TO INFORM THE SECTION 7.11 CONTRIBUTIONS PLAN

Background documents used in the preparation of the Section 7.11 Contributions Plan placed on public exhibition can be viewed on request.

To request this information please contact Danielle Fox on 4732 8022.

NOTE: ERROR IN THE DRAFT SECTION 7.11 CONTRIBUTION PLAN & TECHNICAL DOCUMENT

In these documents District Park 2 is shown with a proposed zoning of RE1 Public Recreation (See Figure 1 below marked in red). This is a drafting error.

District Park 2 is proposed to be zoned as C2 Environmental Conservation. The proposed zoning map for Glenmore Park Stage 3 forms part of the exhibition material as an appendix (Appendix 1) to the Planning Proposal. An extract of the rezoning area is shown below at Figure 2 showing the correct zone for District Park 2 being C2 Environmental Conservation.

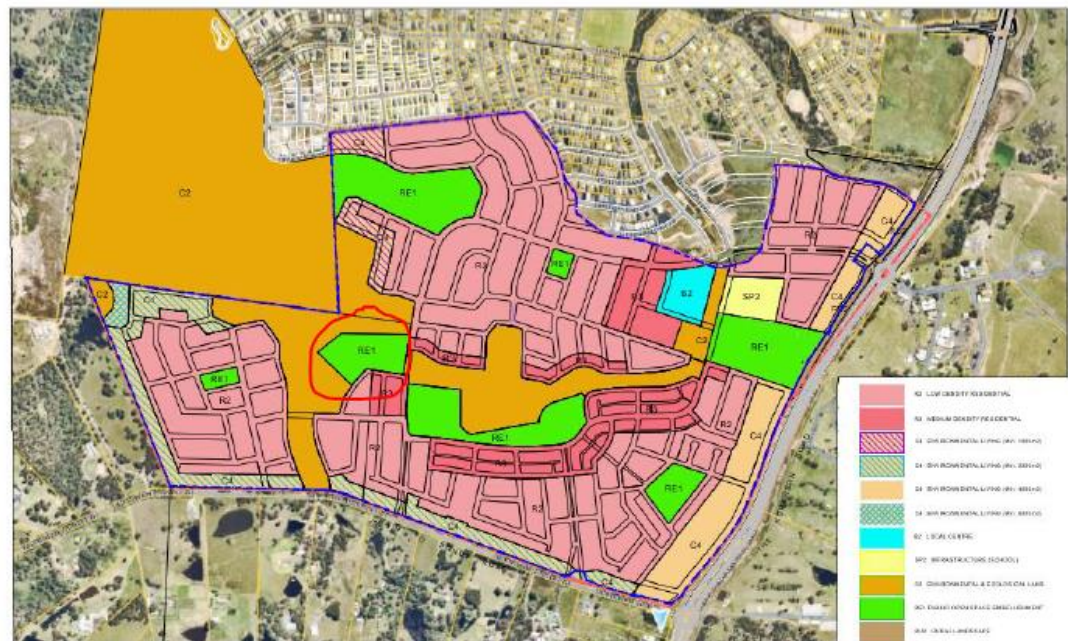


Figure 1 – Extract from Draft 7.11 Contributions Plan

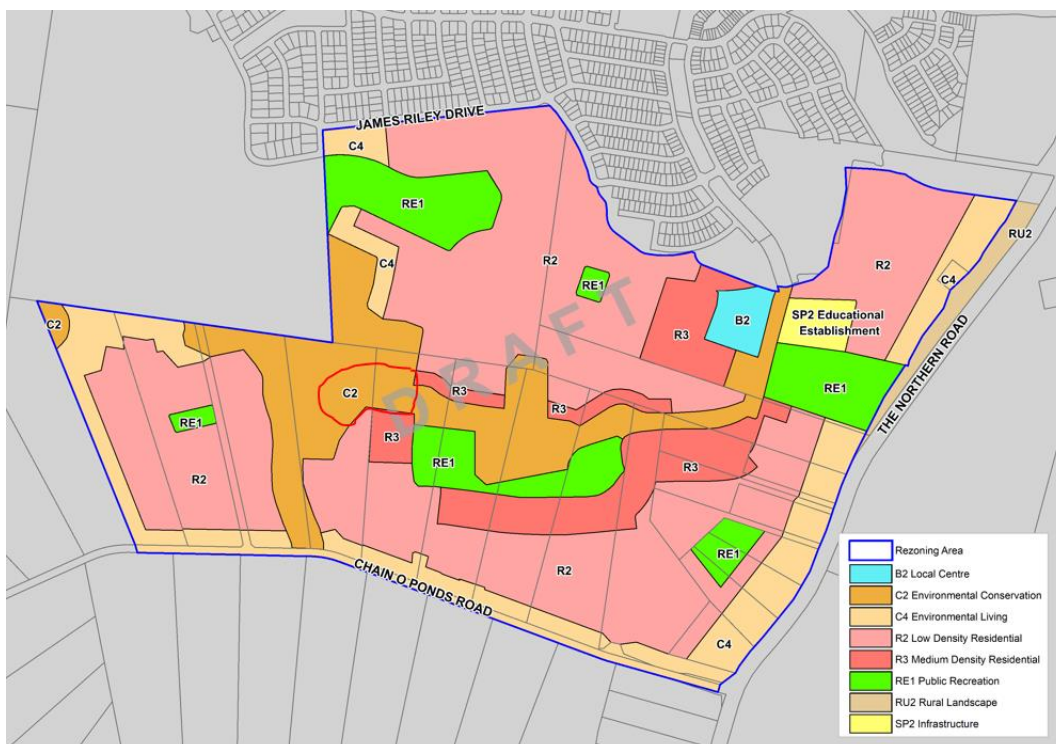


Figure 2 – Extract proposed land zoning map for Glenmore Park Stage 3.

For more information phone Danielle Fox on 4732 8022.